

# Independent living and long-term care in the context of the WHO “Strategy and action plan for healthy ageing in Europe, 2012-2020”

Manfred Huber, PhD  
Coordinator, Ageing & Health  
WHO Regional Office for Europe

Slovenia  
Ljubljana, 18 June 2015



Active Ageing  
Good health adds life to years



World Health  
Organization

REGIONAL OFFICE FOR

Europe



Organisation  
mondiale de la Santé

BUREAU RÉGIONAL DE L'

Europe



Weltgesundheitsorganisation

REGIONALBÜRO FÜR

Europa



Всемирная организация  
здравоохранения

Европейское региональное бюро

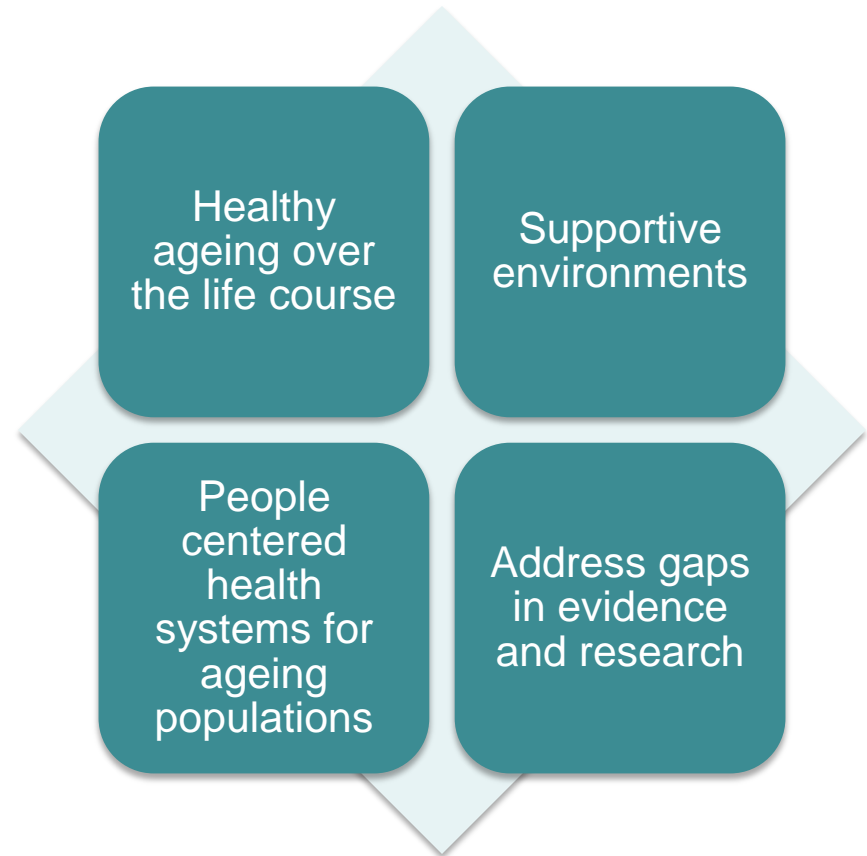
# What is “Long-term care” (LTC)? A quizz

- (A) A range of services at the boundary between health and social care that improves the health and wellbeing of people who are in need for help with ADL and iADL in order to live independent lives as long as possible
- (B) A term not know in my national health policy context: anyway, isn't this the role of families?
- (C) The eternal battle field between different Ministries; levels of government and professional cultures
- (D) The Cinderella of health and social policy
- (E) A test case for implementing H2020
- (F) All of the above

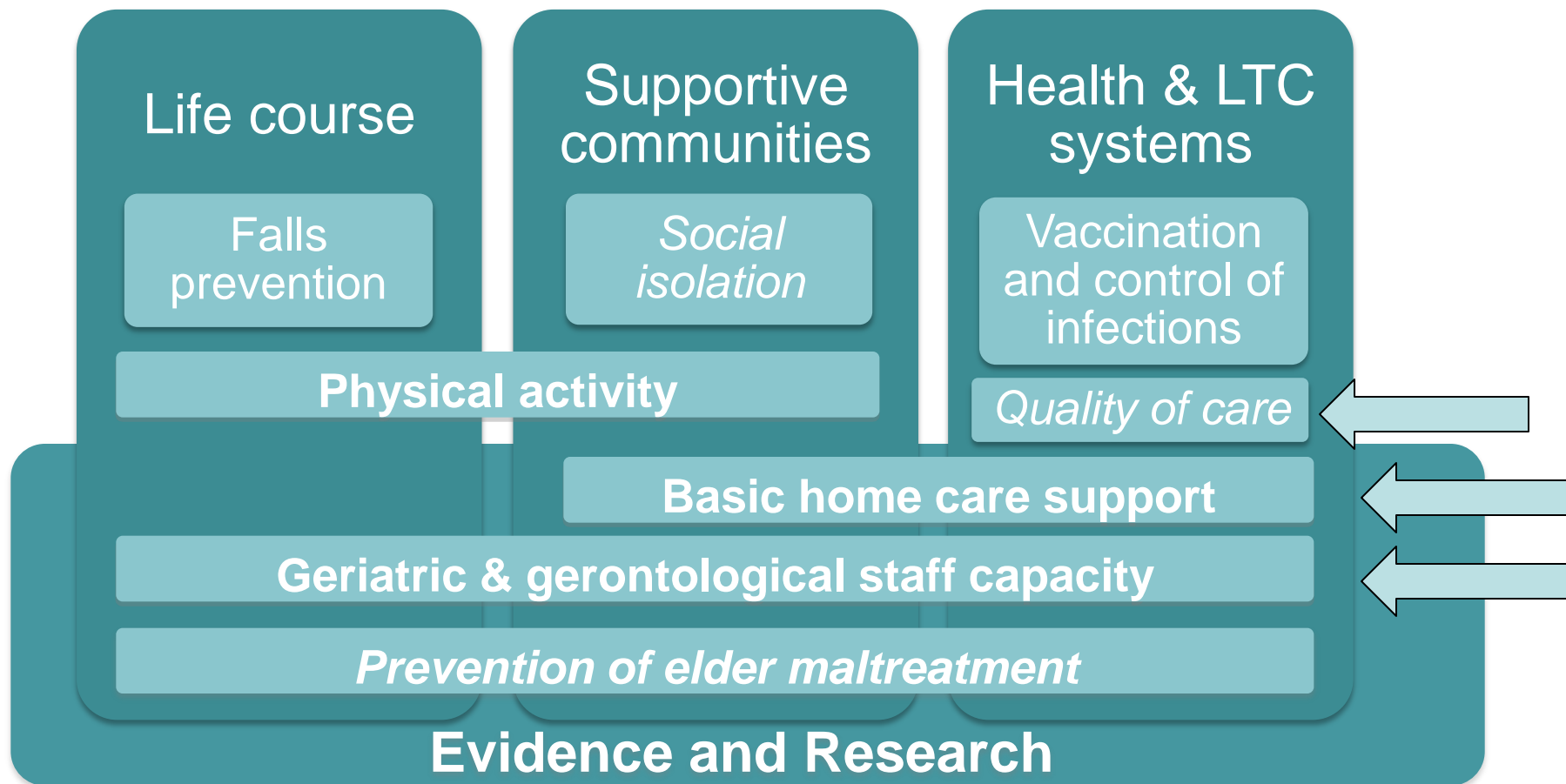
# WHO Strategy and action plan on healthy ageing for Europe, 2012-2020

**Four** Strategic areas of action, closely aligned with

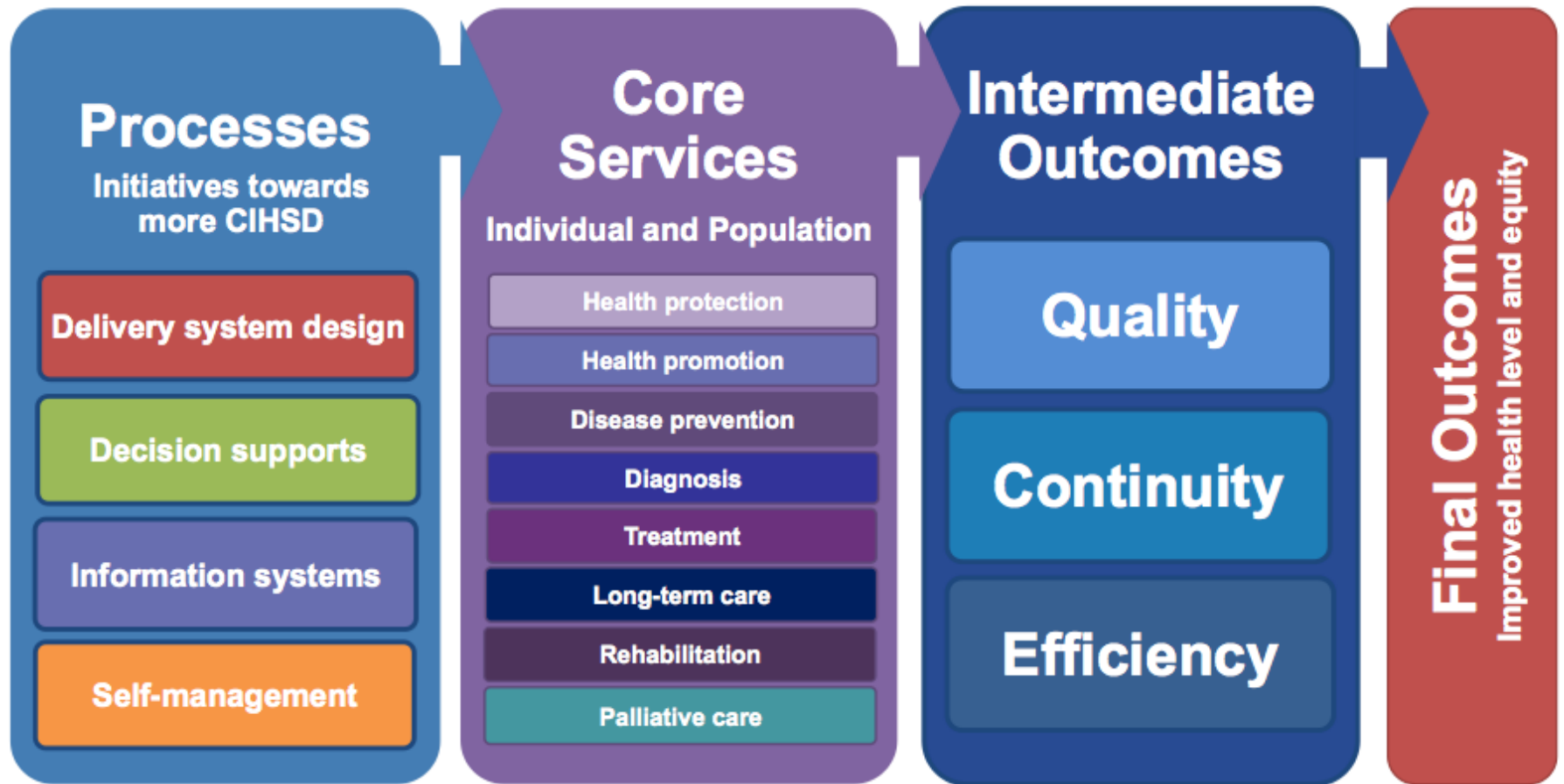
*Health 2020, the overarching health policy for health and wellbeing in Europe*



# LTC within the Strategy and action plan for health ageing in Europe, 2012-2020

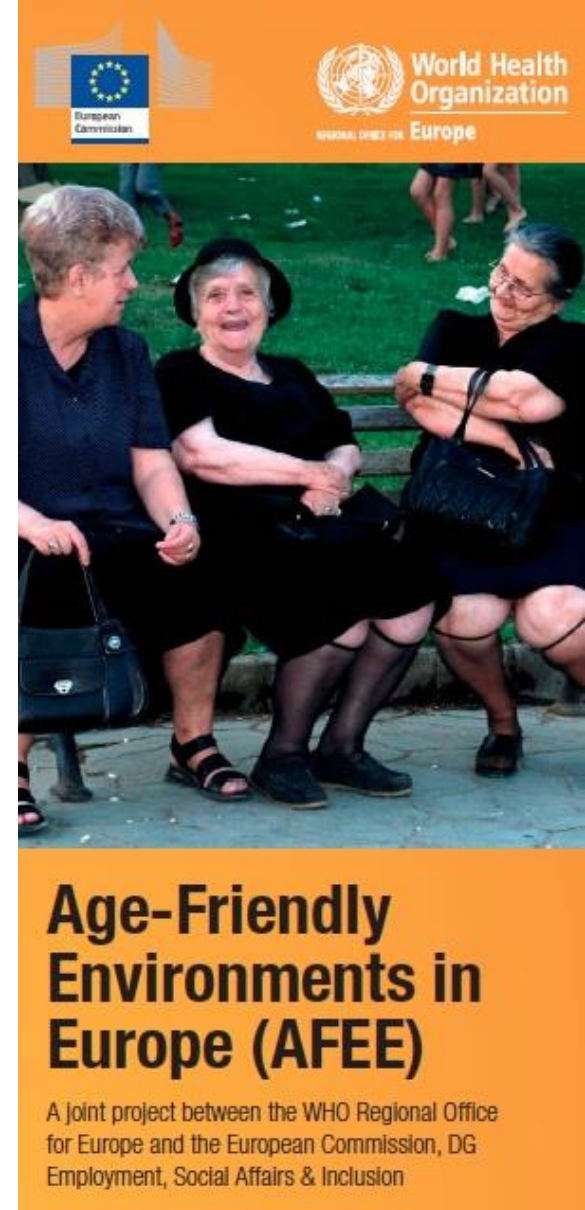


# Coordinated/integrated health services delivery (CIHSD)



# Supportive environments

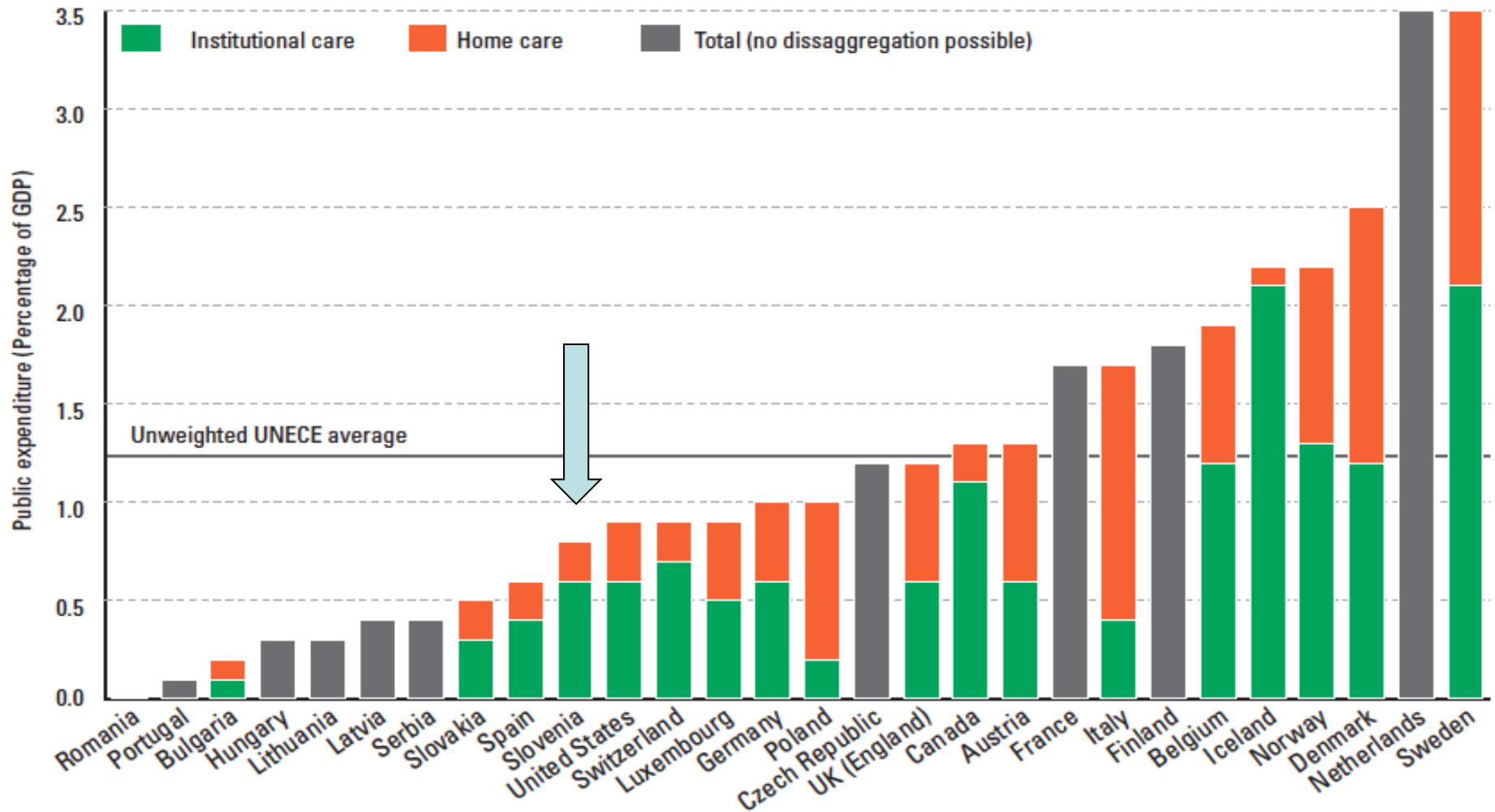
- Long-championed by “European Healthy Cities Network”
- AFEE: joint project with European Commission, DG Employment, Social Affairs & Inclusion
- Cooperation with EC under Innovation Partnership on active & healthy ageing, D4 group on supportive environments





# LTC: Big differences in expenditure levels

Figure 8.1: Public expenditure on long-term care, by care setting – 2009 or latest available year



Source: Own calculation based on OECD Health Data, OECD (2011) and national sources (see statistical annex).

Notes: Grey bars represent data for which no reliable information by care setting is available.

# More people receive care at home

Figure 7.10a: Share of people aged 65 and older cared for in institutions, by gender – 2009 or most recent year

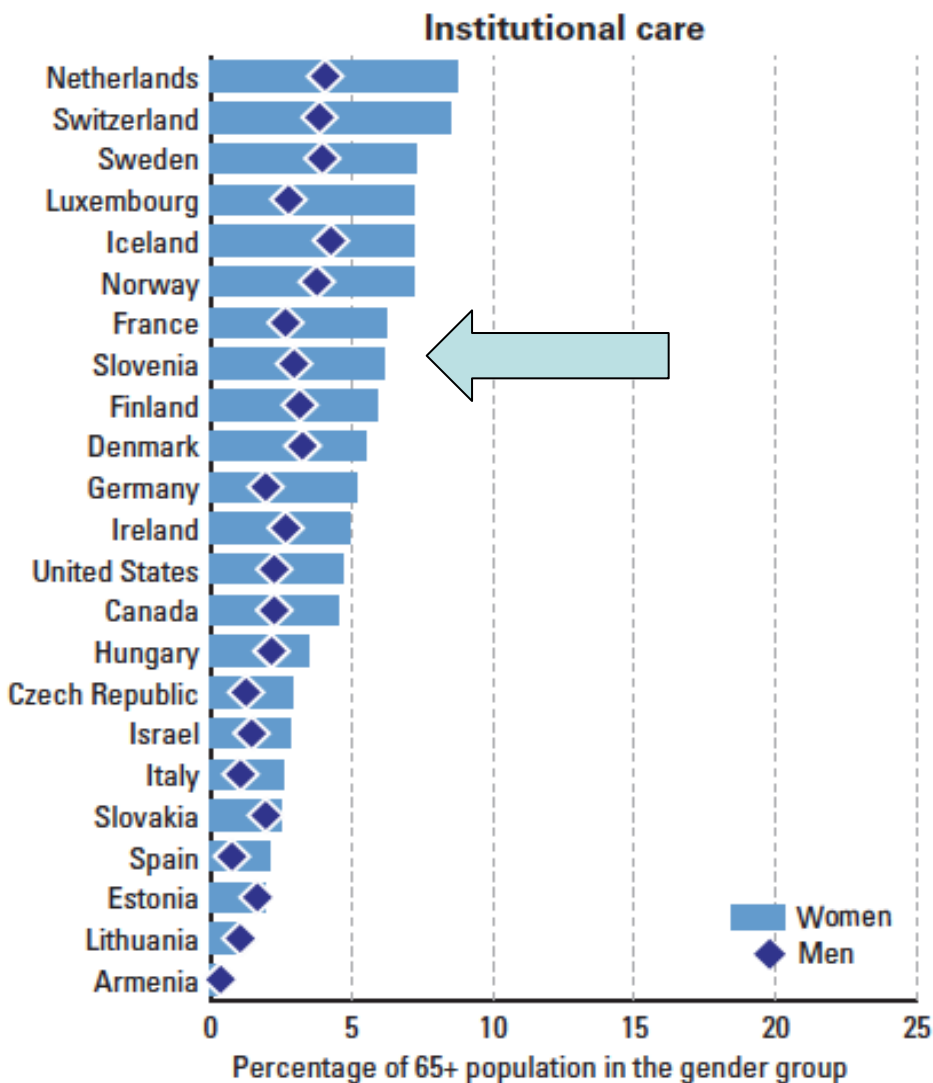
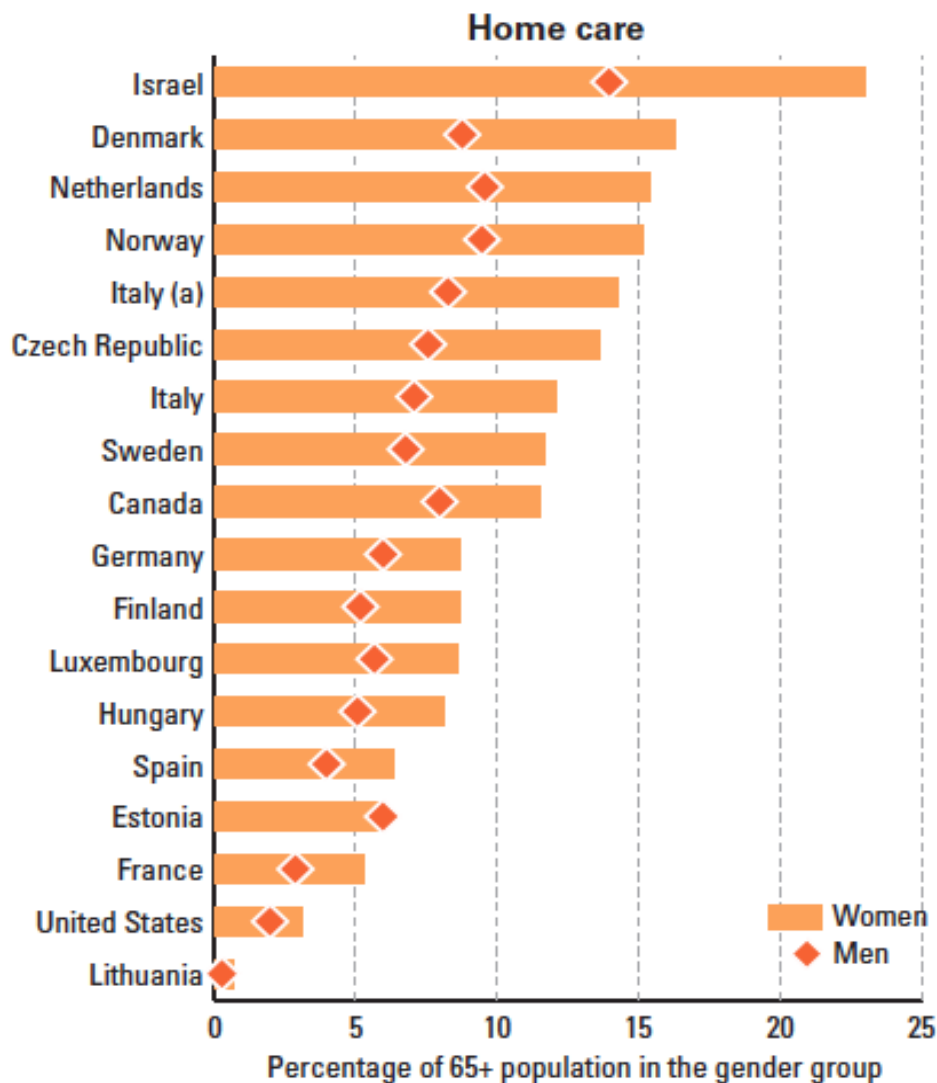


Figure 7.10b: Share of people aged 65 and older receiving formal care services at home, by gender – 2009 or most recent year





# Formal care partially replaces informal care

Figure 7.4a: Association between informal care received and availability of care services

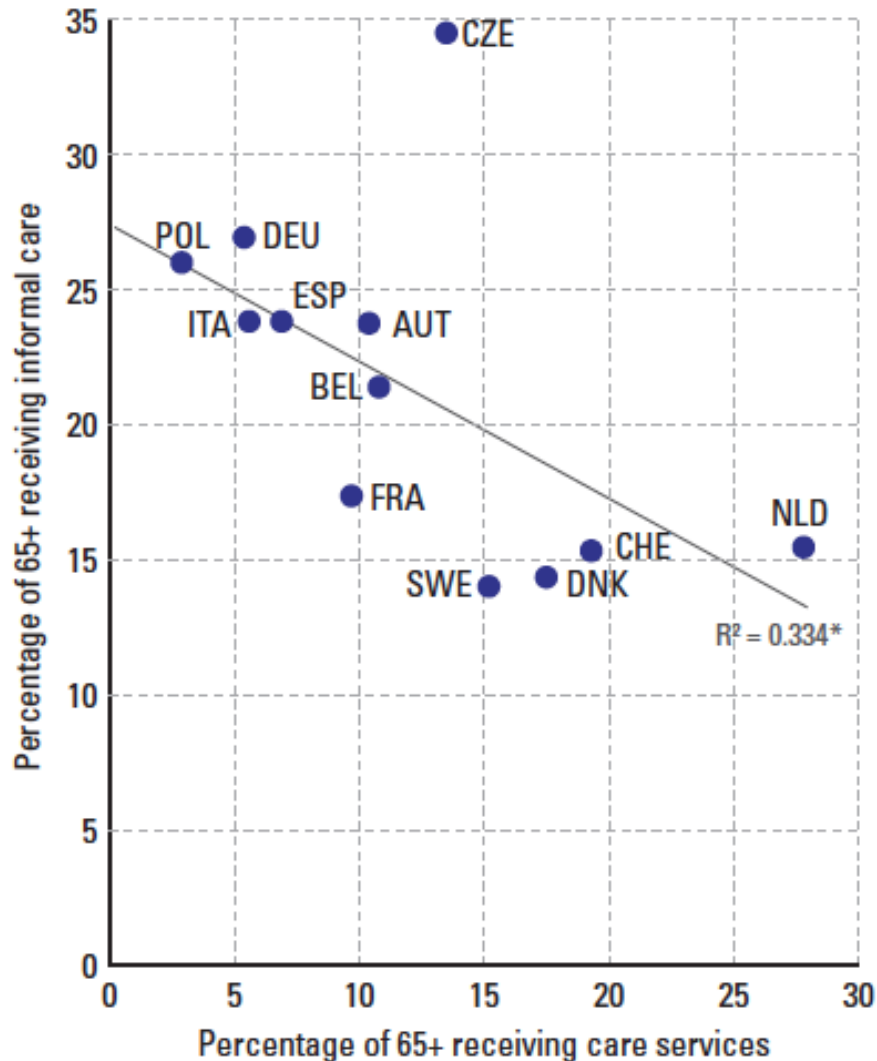
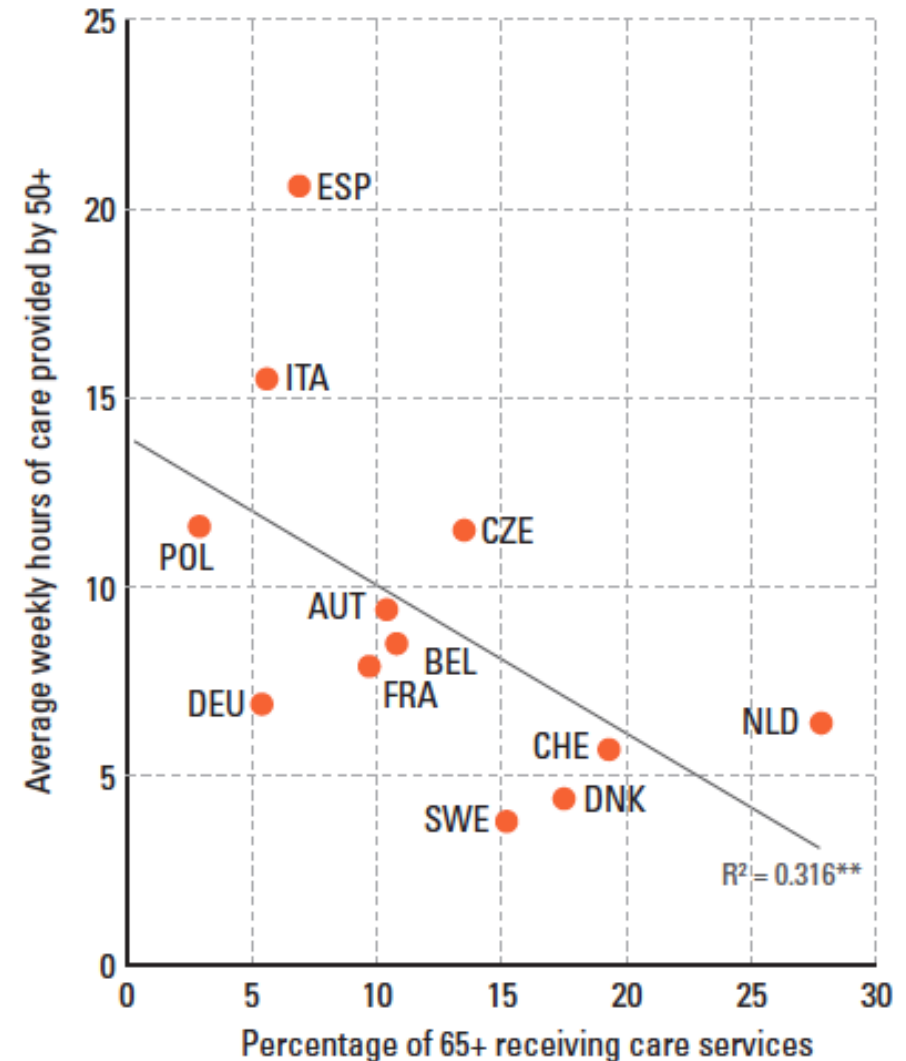


Figure 7.4b: Association between intensity of informal care provided and availability of care services

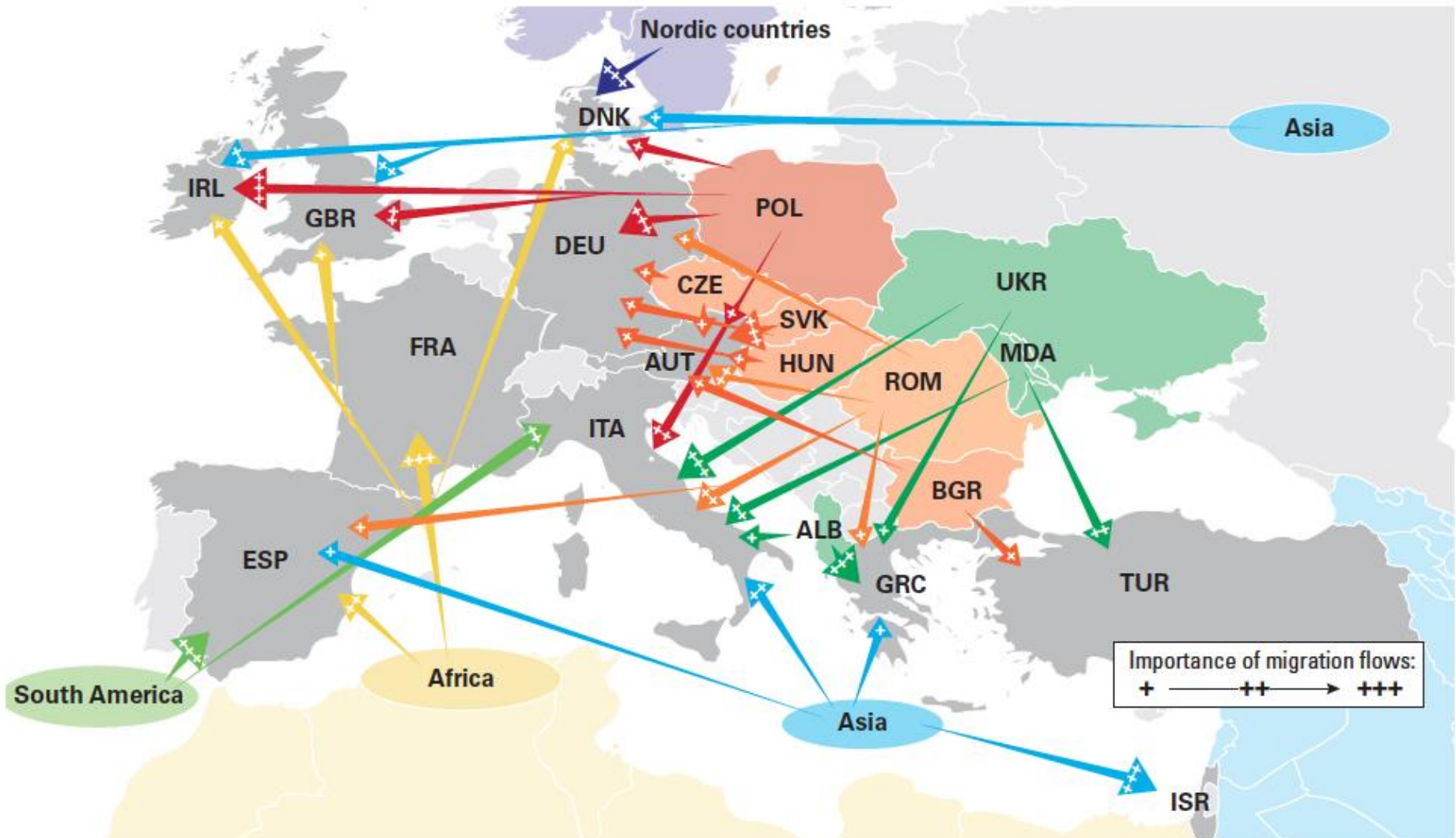


# Coordination problems and lack of integration in LTC in Europe

- Complex patient pathways: multiple health and social care needs
- Patient/family empowerment is key (support to informal care)
- Well-functioning LTC coordination a unique illustration for H2020 principles (voluntary action by groups of senior people; different Ministries/levels of government)

# Internationalization of LTC: staff migration flows have been growing

Figure 6.4: Main countries of origin and destination of migrant care workers in Europe



# European and Global cooperation

- European Innovation Partnership on Active and Healthy Ageing in Europe
- WHO global work plan 2014-2015:
  - Revised conceptual framework for healthy ageing, to inform:
  - World Report on health and ageing (Oct 2015)
  - Global strategy and action plan for 2016

# Summary points for further discussions (1)

- Evidence on demand, services, recipients, unit-cost and total public expenditure for LTC; mix of ownership of providers
- What is the scope of home care services?
- Effect of demographic ageing on family situation, and availability of informal and formal care for older people living at home or in institutions
- Supportive services: day-care, respite, meals?

## Summary points for further discussions (2)

- How are care homes regulated?
- What are the most important quality of care issues / regulations for long-term care?
- How is quality monitored?
- Where can the cooperation between health and social care (and LTC) be improved?
- How can funding for long-term care be increased/secured in a sustainable way?



# References

- **Source for graphs and data on LTC in Europe:**  
Rodrigues et al. (Eds.) (2012) Facts and figures on LTC and healthy ageing, European Centre for Social Welfare Policy and Research, Vienna
- WHO Strategy and action plan for healthy ageing in Europe, 2012-2020, Copenhagen
- OECD (2013) A Good Life in Old Age, Monitoring and improving quality in long-term care, Paris

AGEING AND SEXUAL HEALTH

# HEPA Europe

European Network for the Promotion of Health-Enhancing Physical Activity



## PHYSICAL ACTIVITY PROMOTION IN SOCIALLY DISADVANTAGED GROUPS: PRINCIPLES FOR ACTION

Policy summary



Regional Committee for Europe  
Sixty-second session

Malta, 10-13 September 2012

Entre Nous



World Health Organization



European Union



INFP



World Health Organization

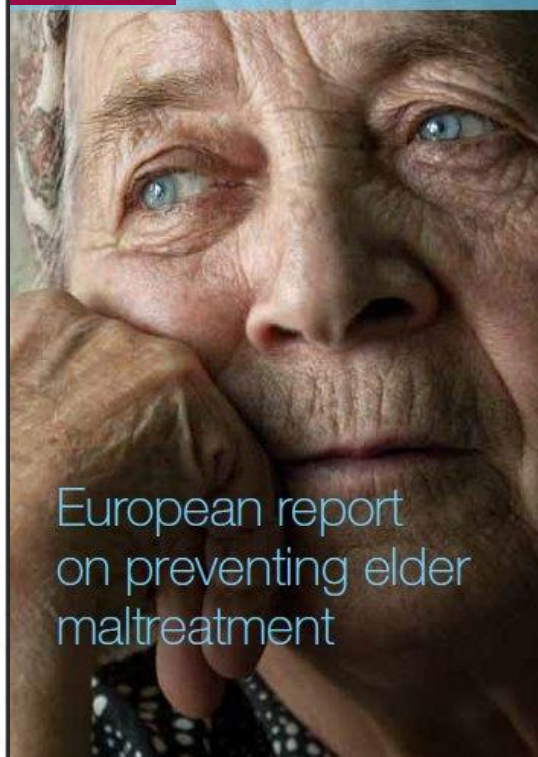


European Union



# HEALTH 2020

A European policy framework supporting action across government and society for health and well-being



European report on preventing elder maltreatment



## Strategy and action plan for healthy ageing in Europe, 2012-2020



Thank you!

[www.euro.who.int/ageing](http://www.euro.who.int/ageing)

mhu@euro.who.int

